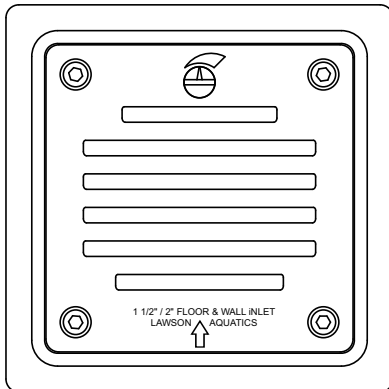


The only fitting for floor and wall that is flush and safe underfoot.

FEATURES

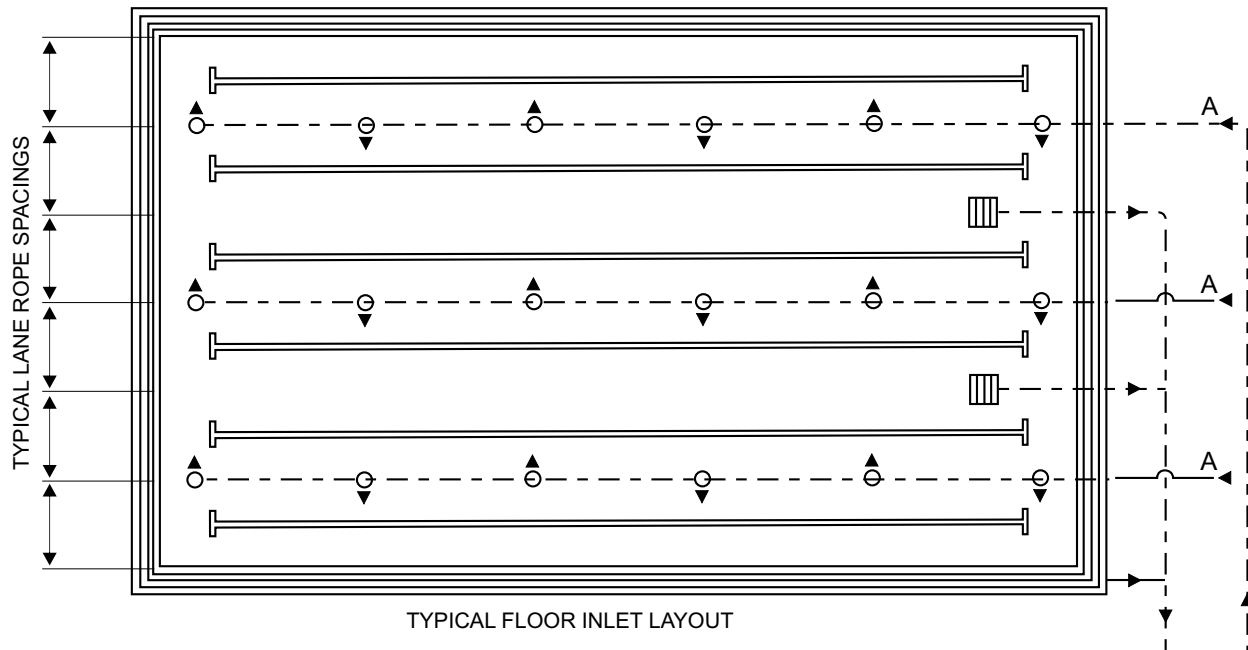
- Suitable for both 2" or 1.5" inlets
- Maximum flow open area equal to 2" pipe size—minimum head loss at full flow
- Minimum flow area is one half that of a 1.5" pipe enabling adequate restriction on both 2" & 1.5" pipe flows.
- Does not block with debris.
- Blanking plate provided for pressure testing
- Available in black, white and bone
- 1-1/2" or 2" slip fitting



MAXIMUM 2ft HEAD LOSS / 100ft LENGTH OF HEADER PIPE. 1.5" & 2" Plumbing Option

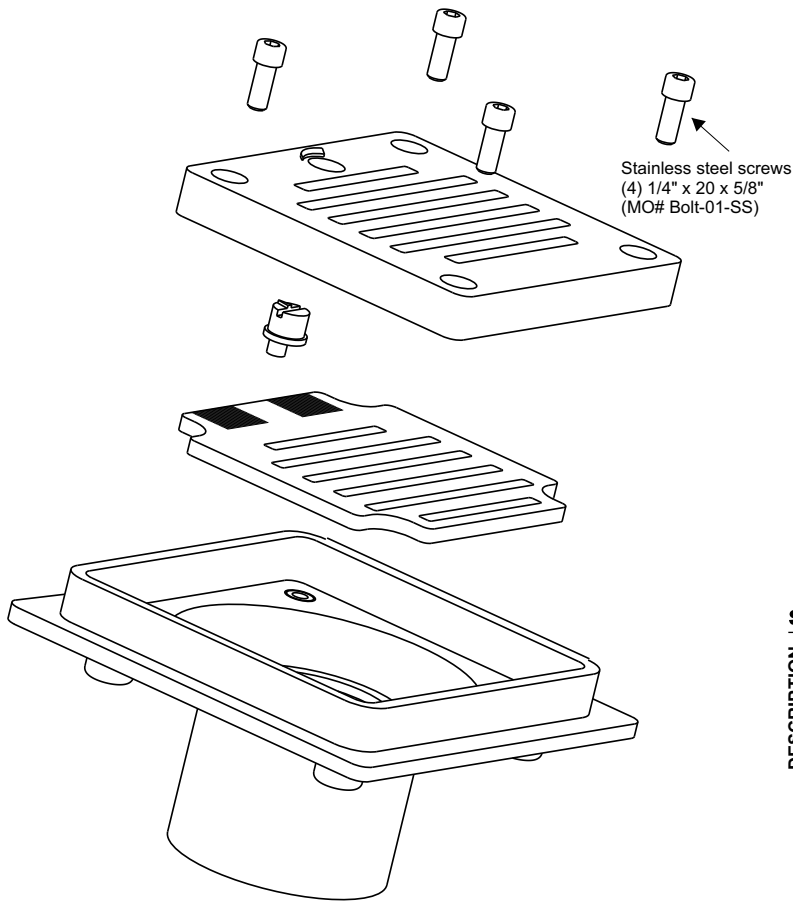
INLET	% OPEN	FLOW	INLET VELOCITY	HEAD LOSS (AT INLET)	RECOMMENDED DESIGN FLOW
2"	100	**90 gpm	8 ft / sec	0.50 psi	70 gpm
2"	100	70 gpm	6.4 ft / sec	0.27 psi	70 gpm
1.5"	100	**50 gpm	4.6 ft / sec	0.14 psi	40 gpm
1.5"	100	30 gpm	2.7 ft / sec	0.05 psi	40 gpm

**Recommended maximum flow.



FLOOR & WALL

ADJUSTABLE INLET
MLD-FW-02



WARNING / ATTENTION / AVISO

This product MUST ONLY BE USED as a pool floor or wall inlet fitting.

DO NOT USE...

- as a suction outlet
- as a drain or outlet cover
- unless bolts are tight and grate is not broken, cracked or warped.



Not following these guidelines can be hazardous and result in serious injury or death.

SPECIFICATIONS

DESCRIPTION	SIZE	5" X 5"
	MATERIAL	PVC
	SURFACE	NON-SKID SURFACE
	COLOR	WHITE, BLACK, BONE
	FLOW RATE	20 GPM TO 90 GPM

CAUTION

The fitting fasteners must be observed for damage or tampering before each use of this facility and or at least annually.

